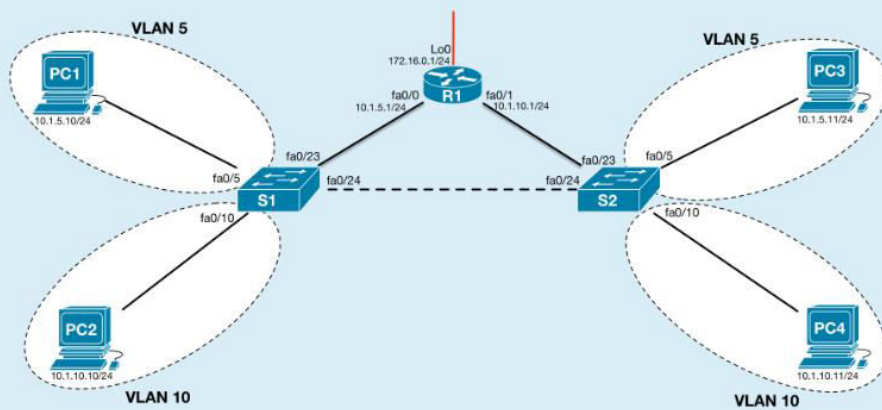


- [Switch]: Explain
- [Hub]: Explain
- [Router]: Explain
- [Ethernet Switches]: Explain? ~~Methods?~~ Multi-layer switching
- [ARP]: Explain
- [Ethernet Frames]: Transmission?
- Broadcast vs Collision Domains
- Straight through vs Crossover?
- [Structured Cabling]: Types?
- [Vlan]: Explain? Explain picture? Advantages? Trunking?

Refer to the network topology below. Two paths exist for packets transmitted from PC4 to hosts connected to S1:

1. S2 -> R1 -> S1
2. S2 -> S1



Which path will packets sent by PC4 to PC1 traverse? Justify your response.

- [Inter-vlan]: Explain? Approaches?
- [Spanning tree protocol]: Explain